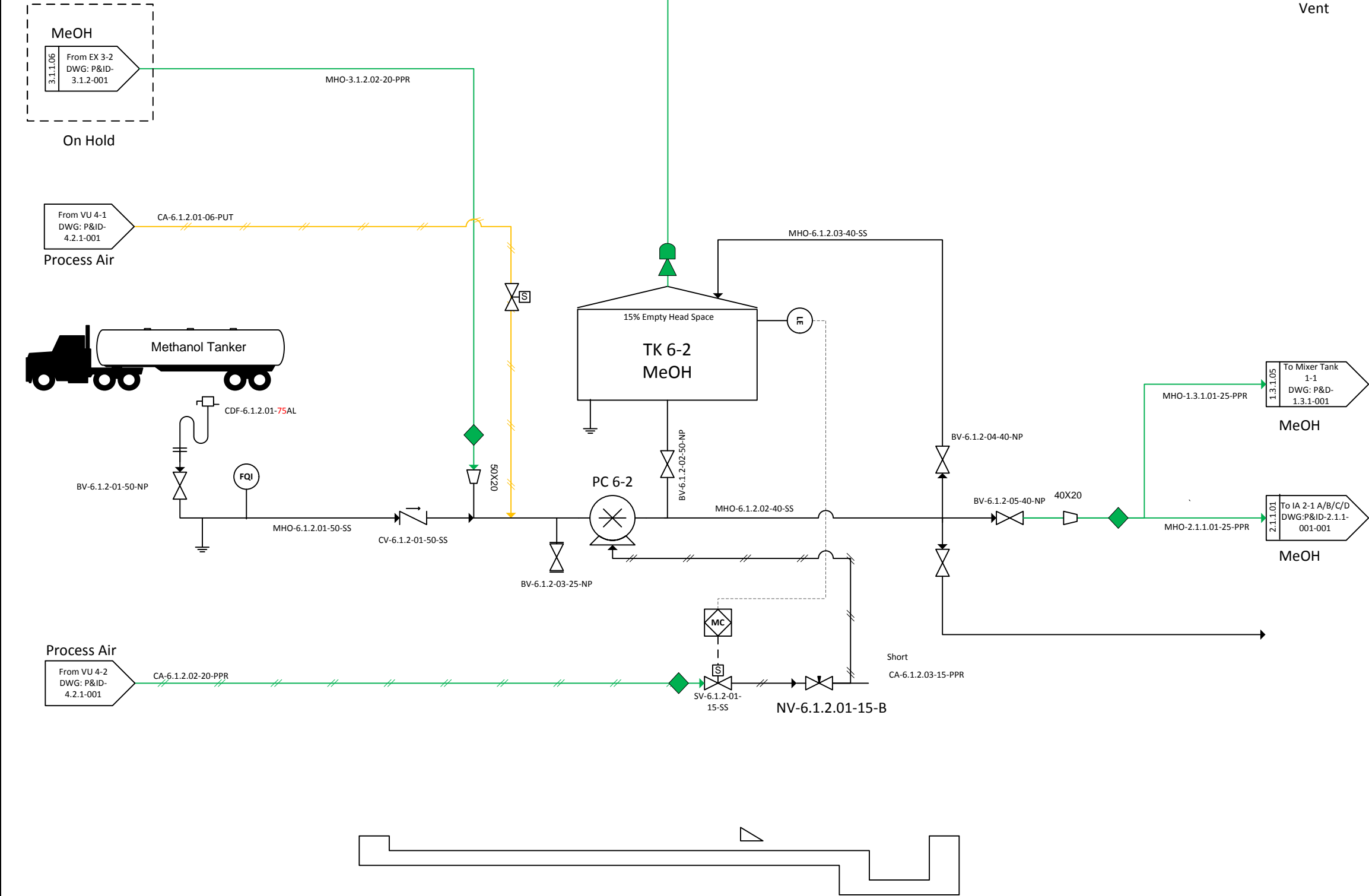


TK 6-2		PC 6-4	
d	1.8	Flow	4
T-T	1.8	Duty	1
Design / Opp. P	50 / Amb	Design / Opp. P	200
Design / Opp. T	Amb	Design / Opp. T	Amb
M.O.C.	SS	M.O.C.	SS



NOTES:

LEGEND

CODE	DESCRIPTION
WCO	Waste Cooking Oil
ECO	Esterified Cooking Oil
RBD	Raw Biodiesel
PBD	Polished Biodiesel
BDP	Biodiesel Product
MHO	Methanol
CAT	Methanol Catalyst
ADD	Biodiesel Additives
PF	Process Fluid (Mixture)
EF1	Effluent 1
EF2	Effluent 2
RG	Raw Glycerol
CW	Cold Water
HW	Hot Water
UW	Utility Water
PV	Process Vapour
CA	Compressed Air

04	2016/06/29	Mid-Construction	-
03	2016/02/17	Pre-Construction	-
02	2015/12/14	Post-HAZOP	-
01	2015/12/09	Pre-HAZOP	-
00	2015/11/23	First Draft	-
REV	DATE	REVISION DESCRIPTION	APP

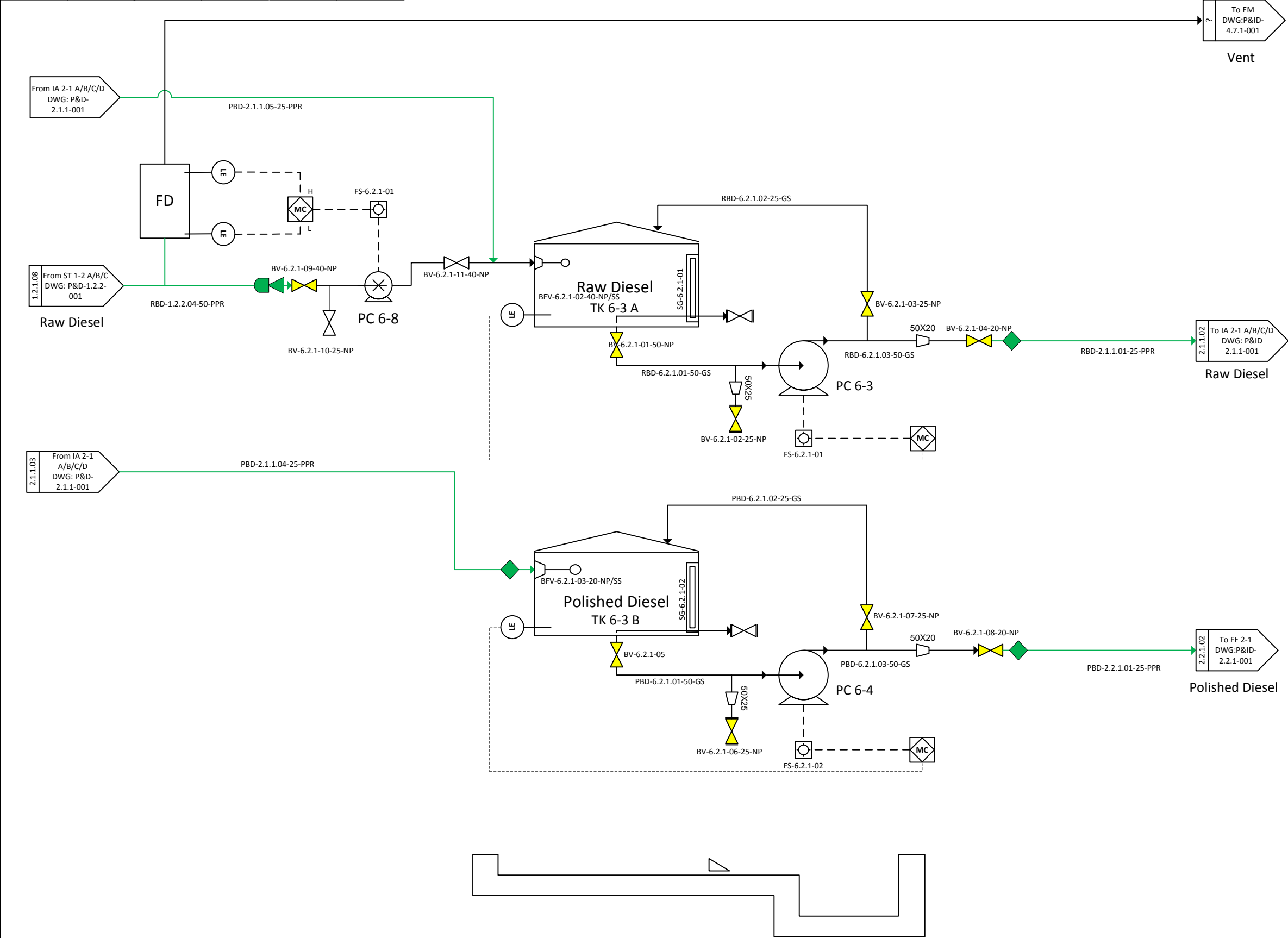
CLIENT:

NORTH-WEST UNIVERSITY
YUNIBESITI YA BOKONE-BOPHIRIMA
NOORDWES-UNIVERSITEIT

WP 6.1.2-Feed Tanks

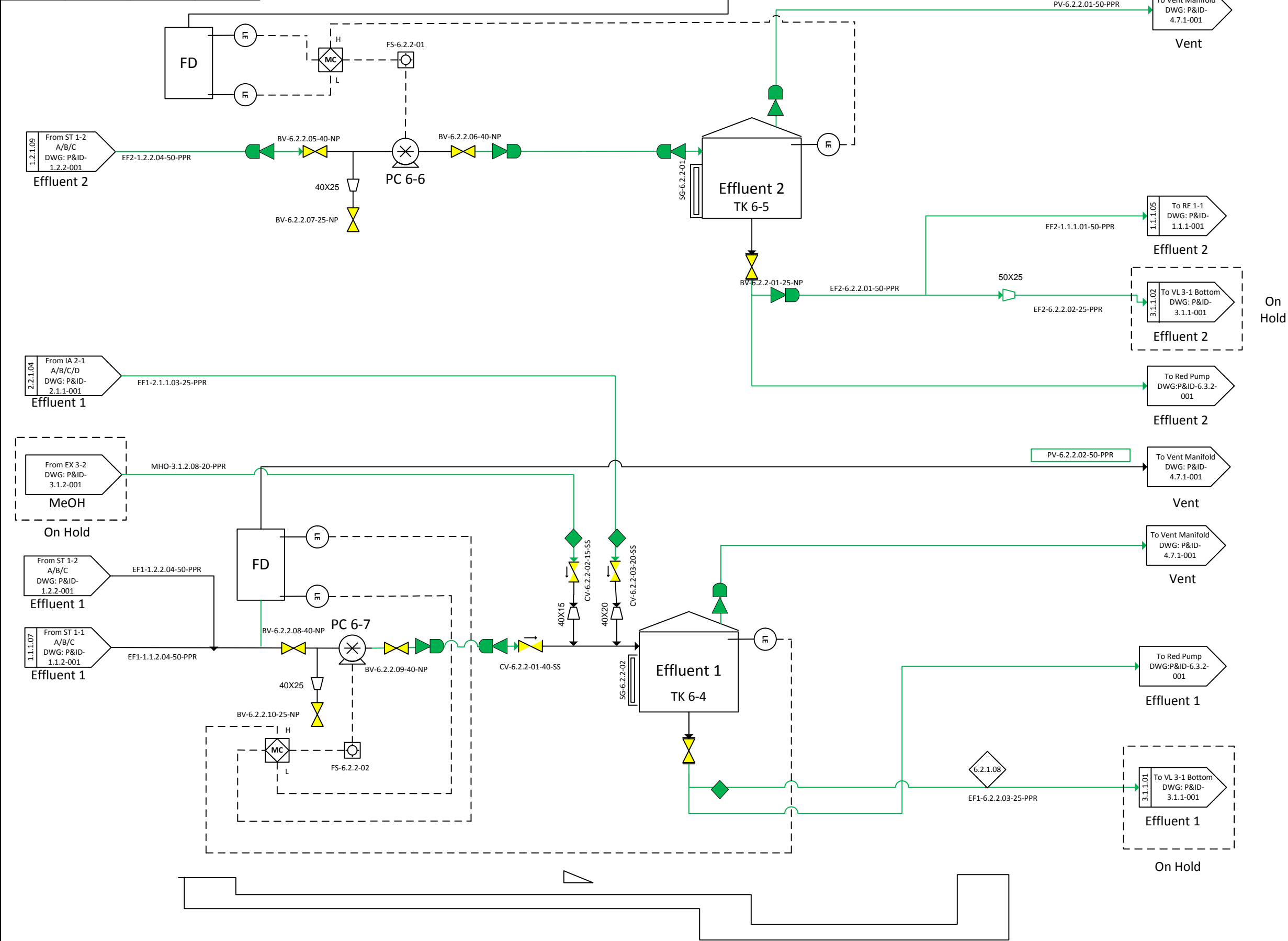
DRAWN BY: MORGAN, L	DATE: 2015/10/23	SCALE: NTS	SIZE: A3
DWG NO: iLive-P&ID-6.1.2-001	SHEET: 001	REV:	OE

TK 6-3 A/B		PC 6-3		PC 6-4	
d	1.8	Dimensions		Dimensions	
T-T	1.8	Duty	0.3	Duty	0.3
Design / Opp. P	Amb	Design / Opp. P	300 / 200	Design / Opp. P	300 / 200
Design / Opp. T	60 / 80	Design / Opp. T	60 / 50	Design / Opp. T	60 / 50
M.O.C.	HDPE	M.O.C.	CS	M.O.C.	CS



NOTES:			
LEGEND			
CODE	DESCRIPTION		
WCO	Waste Cooking Oil		
ECO	Esterified Cooking Oil		
RBD	Raw Biodiesel		
PBD	Polished Biodiesel		
BDP	Biodiesel Product		
MHO	Methanol		
CAT	Methanol Catalyst		
ADD	Biodiesel Additives		
PF	Process Fluid (Mixture)		
EF1	Effluent 1		
EF2	Effluent 2		
RG	Raw Glycerol		
CW	Cold Water		
HW	Hot Water		
UW	Utility Water		
PV	Process Vapour		
CA	Compressed Air		
			-
04	2016/06/29	Mid-Construction	-
03	2016/02/17	Pre-Construction	-
02	2015/12/14	Post-HAZOP	-
01	2015/12/09	Pre-HAZOP	-
00	2015/11/23	First Draft	-
REV	DATE	REVISION DESCRIPTION	APP
CLIENT:			
WP 6.2.1-Intermediate Tanks			
DRAWN BY:	DATE:	SCALE:	SIZE:
MORGAN, L	2015/10/23	NTS	A3
DWG NO:	SHEET:		REV:
iLive-P&ID-6.2.1-001	001		0E

TK 6-4		TK 6-5	
Dimensions	1.8	Dimensions	1.8
T-T	1.8	T-T	1.8
Design / Opp. P	50 / Amb	Design / Opp. P	50 / Amb
Design / Opp. T	100 / 50	Design / Opp. T	100/ 50
M.O.C.	SS	M.O.C.	SS



NOTES:

LEGEND

CODE	DESCRIPTION
WCO	Waste Cooking Oil
ECO	Esterified Cooking Oil
RBD	Raw Biodiesel
PBD	Polished Biodiesel
BDP	Biodiesel Product
MHO	Methanol
CAT	Methanol Catalyst
ADD	Biodiesel Additives
PF	Process Fluid (Mixture)
EF1	Effluent 1
EF2	Effluent 2
RG	Raw Glycerol
CW	Cold Water
HW	Hot Water
UW	Utility Water
PV	Process Vapour
CA	Compressed Air

04	2016/06/29	Mid-Construction	-
03	2016/02/17	Pre-Construction	-
02	2015/12/14	Post-HAZOP	-
01	2015/12/09	Pre-HAZOP	*
00	2015/11/23	First Draft	-
REV	DATE	REVISION DESCRIPTION	APP

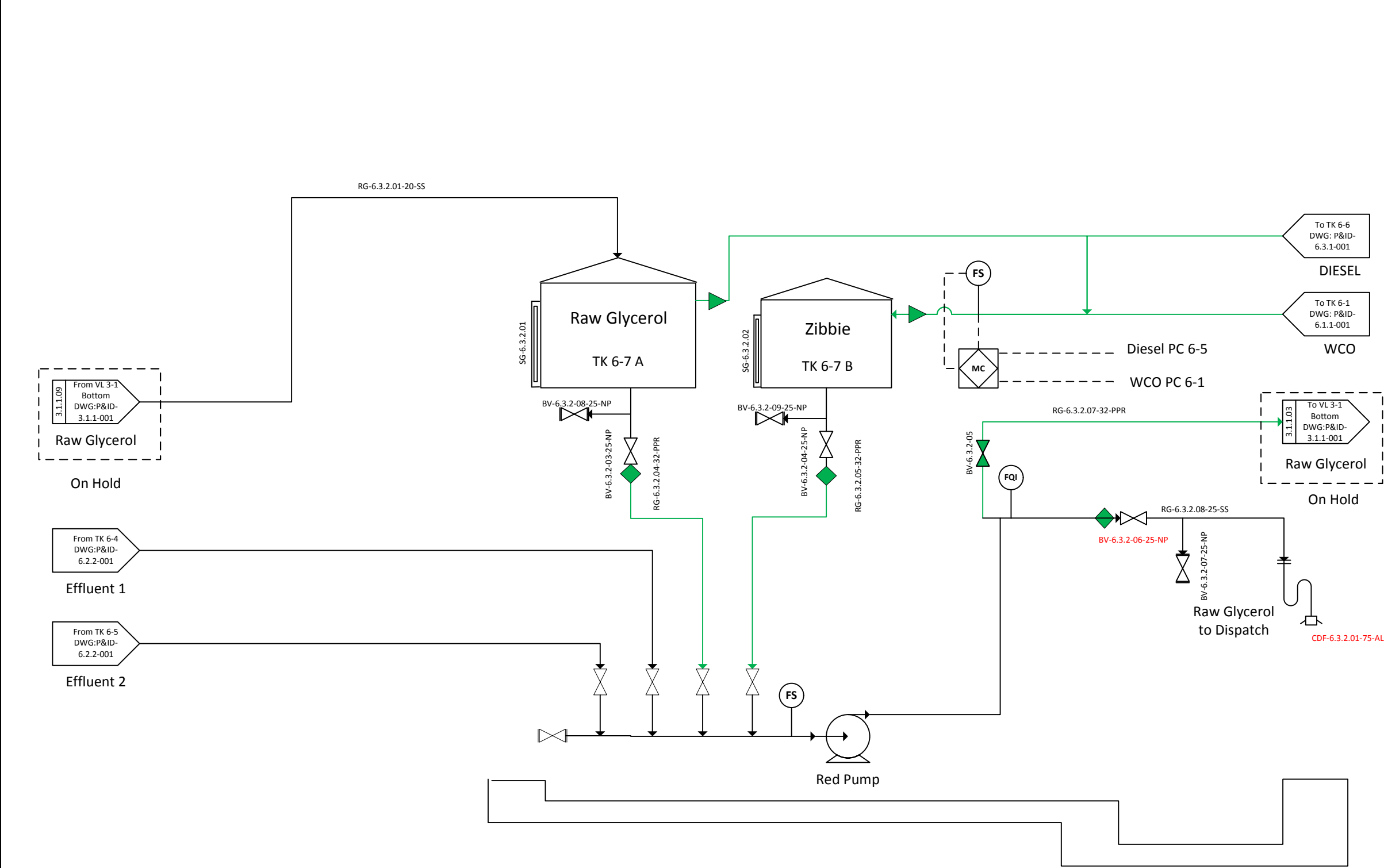
CLIENT:

WP 6.2.2-Intermediate Tanks

DRAWN BY: MORGAN, L	DATE: 2015/10/23	SCALE: NTS	SIZE: A3
DWG NO: iLive-P&ID-6.2.2-001		SHEET: 001	REV: 0E

DRAWN BY: MORGAN, L	DATE: 2015/10/23	SCALE: NTS	SIZE: A3
DWG NO: iLive-P&ID-6.3.1-001		SHEET: 001	REV: 0E

TK 6-7 A		TK 6-7 B	
Dimensions	2.3	Dimensions	1.8
T-T	2.7	T-T	1.8
Design / Opp. P	Amb	Design / Opp. P	Amb
Design / Opp. T	60 / 40	Design / Opp. T	60 / 40
M.O.C.	HDPE	M.O.C.	HDPE



NOTES:

LEGEND	
CODE	DESCRIPTION
WCO	Waste Cooking Oil
ECO	Esterified Cooking Oil
RBD	Raw Biodiesel
PBD	Polished Biodiesel
BDP	Biodiesel Product
MHO	Methanol
CAT	Methanol Catalyst
ADD	Biodiesel Additives
PF	Process Fluid (Mixture)
EF1	Effluent 1
EF2	Effluent 2
RG	Raw Glycerol
CW	Cold Water
HW	Hot Water
UW	Utility Water
PV	Process Vapour
CA	Compressed Air

04	2016/06/30	Mid-Construction	-
03	2016/02/17	Pre-Construction	-
02	2015/12/14	Post-HAZOP	-
01	2015/12/09	Pre-HAZOP	-
00	2015/11/23	First Draft	-
REV	DATE	REVISION DESCRIPTION	APP

CLIENT:

NORTH-WEST UNIVERSITY
YUNIBESITI YA BOKONE-BOPHIRIMA
NOORDWES-UNIVERSITEIT

WP 6.3.2-Product Tanks

DRAWN BY: MORGAN, L	DATE: 2015/10/23	SCALE: NTS	SIZE: A3
DWG NO: iLive-P&ID-6.3.2-001	SHEET: 001	REV:	0E